



FAUCET INSTRUCTION MANUAL TEMPLATE DESIGN GUIDE

PAPER BASIS WEIGHT: 20-lb. PAPER OR 75 GRAMS/SQ METER.

DOCUMENT SIZE: PRINTED TWO-SIDES ON A4 PAPER AND FOLDS TO A5.

TEMPLATE FORMATTING CANADIAN FRENCH AND LATIN AMERICAN SPANISH MANUALS ARE TO BE FORMATTED AS SHOWN IN THE FAUCET TEMPLATE.

ALL BLUE TEXT IS TO BE REPLACED WITH PRODUCT-SPECIFIC INFORMATION. BLACK TEXT IS NOT TO BE EDITED OR DELETED UNLESS IT IS NOT APPLICABLE.

ALL GREEN TEXT IS TO BE REPLACED WITH PRODUCT-SPECIFIC INFORMATION AND TRANSLATED.

AFTER TEXT IS TRANSLATED AND ALL PRODUCT-SPECIFIC TEXT IS PLACED, ALL TEXT IS TO BE CHANGED TO EITHER BLACK OR WHITE. THE DOCUMENT WILL BE PRINTED IN GREYSKALE (BLACK AND WHITE).

PLEASE USE SAME LANGUAGES IN INSTRUCTION MANUAL AS USED ON PRODUCT PACKAGING. FOR EXAMPLE, IF PACKAGING IS ENGLISH, CANADIAN FRENCH, AND LATIN AMERICAN SPANISH, THE MANUAL SHOULD BE ENGLISH/ CANADIAN FRENCH/LATIN AMERICAN SPANISH UNLESS OTHERWISE APPROVED BY LOWE'S COPYWRITERS.

INFORMATION ON OBTAINING TRANSLATIONS CAN BE FOUND AT:
[HTTP://WWW.LOWESLINK.COM/LLMAIN/TRANSLATIONS.HTM](http://www.loweslink.com/llmain/translations.htm)

IMPORTANT: VENDOR REPRESENTS, WARRANTS AND AGREES THAT LABELING, DESIGN, PACKAGING, SPECIFICATIONS SHALL COMPLY IN ALL RESPECTS WITH ALL APPLICABLE LAWS AND STANDARDS.

IMPORTANT: THIS TEMPLATE IS DESIGNED TO PRINT IN BOOKLET FORM. THEREFORE, FINAL PAGE COUNT MUST BE DIVISIBLE BY 4. BLANK PAGES MAY NEED TO BE ADDED AT END OF DOCUMENT TO DO THIS.

TABLE OF CONTENTS FOR THIS DESIGN GUIDE

LEGEND.....	3
-------------	---

(English)

MANUAL COVER.....	4
PACKAGE AND HARDWARE CONTENTS.....	5
SAFETY INFORMATION / PREPARATION.....	6
ASSEMBLY INSTRUCTIONS	7
OPERATING INSTRUCTIONS / CARE AND MAINTENANCE / TROUBLESHOOTING.....	8
WARRANTY / REPLACEMENT PARTS LIST.....	9

(Translations: French / Spanish)

MANUAL COVER.....	10
PACKAGE AND HARDWARE CONTENTS.....	11
SAFETY INFORMATION / PREPARATION.....	12
ASSEMBLY INSTRUCTIONS	13
OPERATING INSTRUCTIONS / CARE AND MAINTENANCE.....	14
TROUBLESHOOTING.....	15
WARRANTY.....	16
REPLACEMENT PARTS LIST.....	17

LEGEND

ALL INSTRUCTION MANUALS AND RELATED MATERIAL CREATED THROUGH ADAPTATION OF THESE TEMPLATES MUST BE APPROVED BY LOWE'S PRIVATE BRAND COMMUNICATIONS DEPARTMENT PRIOR TO PRODUCTION.
CONTACT: LOWE'S BRAND EXCHANGE (LBX)

LOWESBRANDEXCHANGE@LOWES.COM

ARTWORK DISCLAIMERS

DO NOT USE ANY COLOR GRAPHICS OR PHOTOGRAPHY IN YOUR INSTRUCTION MANUALS. INSTRUCTION MANUALS PRINT IN GREYSCALE ONLY.

ALL GRAPHICS SHOWN ARE FOR SIZE AND POSITION ONLY; FINAL LINE-ART GRAPHICS ARE REQUIRED FOR RELEASE TO PRESS.

IMPORTANT VENDOR NOTE

VENDORS ARE RESPONSIBLE FOR THE EXECUTION AND ACCURACY OF THEIR INSTRUCTION MANUALS. THEY ARE SOLELY RESPONSIBLE FOR INSERTING ALL OF THE CORRECT LEGAL CERTIFICATION, WARNING, WARRANTY, AND OTHER APPLICABLE PRODUCT INFORMATION. HARDWARE MUST BE SHOWN AS ACTUAL SIZE IN THE HARDWARE CONTENTS SECTION WITH LINE ART DRAWINGS OF THE HARDWARE, THE DIMENSIONS, NAME DESCRIPTOR AND QUANTITY. LOWE'S IS NOT RESPONSIBLE FOR ANY INCURRED DESIGN, TRANSLATOR OR PRINTING COSTS. PLEASE REFER TO THE TRANSLATIONS REQUIREMENTS ON LOWESLINK.COM

FONT & SOFTWARE USAGE STATEMENT

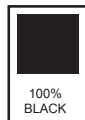
- FONTS USED ON THIS FILE: SEE FONT LEGEND
- CONTACT YOUR APPROPRIATE FONT VENDOR TO PURCHASE THE REQUIRED FONTS FOR THIS TEMPLATE
- ADOBE ILLUSTRATOR CC WAS USED TO CREATE THIS FILE

LOWE'S REQUIRES EACH VENDOR TO OBTAIN THEIR OWN LINE-ART GRAPHICS. ALL INSTRUCTION MANUAL GRAPHICS WILL BE APPROVED BY LOWE'S BRAND MANAGEMENT DURING PROOFING.

COLOR USAGE & PRINT REQUIREMENTS

THESE ARE THE PANTONE COLORS THAT ARE USED IN THIS FILE.

THE ADDITION OF OTHER SPOT COLORS IS NOT PERMITTED.



100%
BLACK

REQUIRED PAPER TYPE

USE THE FOLLOWING PAPER FOR YOUR INSTRUCTION MANUALS:

- PAPER BASIS WEIGHT: 20-lb. PAPER OR 75 GRAMS/SQ METER MINIMUM.
- DOCUMENT SIZE: PRINTED TWO-SIDES ON A4 PAPER AND FOLDS TO A5. INCLUDE SAMPLE MOCKUP TO INDICATE FOLD(S) AND PAGE LAYOUT.



Editable Text
(DO NOT PRINT)

THIS COLOR INDICATES ALL TEXT TO BE CHANGED WITH PRODUCT SPECIFIC TEXT.



Editable Text
(DO NOT PRINT)

THIS COLOR INDICATES ALL TEXT TO BE TRANSLATED INTO APPROPRIATE LANGUAGES.



CALLOUTS
(DO NOT PRINT)

THIS COLOR IS USED FOR NOTES AND DOES NOT PRINT.

FONT LEGEND

ALL FONTS MUST BE ARIAL BOLD OR ARIAL REGULAR, 6 PT. (MINIMUM) ON 6 PT. LEADING UNLESS OTHERWISE SPECIFIED.

IMPORTANT: VENDOR REPRESENTS, WARRANTS AND AGREES THAT LABELING, DESIGN, PACKAGING, SPECIFICATIONS SHALL COMPLY IN ALL RESPECTS WITH ALL APPLICABLE LAWS AND STANDARDS.

THIS DESIGN IS PROPRIETARY AND CONFIDENTIAL TO LOWE'S COMPANIES, INC., AND CANNOT BE COPIED OR OTHERWISE REPRODUCED OR USED WITHOUT THE EXPRESS WRITTEN PERMISSION OF LOWE'S.

**ALL TEXT AND IMAGES ARE "FOR POSITION ONLY"
AND SHOULD BE REPLACED WITH CORRECT INFO AND/OR
IMAGES PROVIDED BY THE MANUFACTURER.**

FONT USAGE: ARIAL REGULAR & BOLD SHOULD BE USED FOR ALL TEXT.

1. VENDOR IS TO REPLACE ® WITH TM IN LOGO WHEN APPLICABLE. THE SAME LOGO APPROVED FOR PACKAGING IS TO BE USED IN THIS INSTRUCTION MANUAL.
2. INSERT REGISTERED TRADEMARK NOTICE (BELOW LOGO) IF PRODUCT IS A ® LOGO MARK ONLY. TEXT IS 5 PT. ARIAL REGULAR, LINE SPACING (LEADING) IS 6 PT. ALIGN LEFT. **NOTE TO VENDOR:** PLACE THE **ACTUAL** BRAND NAME AS SEEN ON THE LOGO.

ITEM NO. AND MODEL NO. ARE ARIAL REGULAR, 6 PT., ALIGN RIGHT.


INSERT PRODUCT NAME (AS WRITTEN ON PACKAGING). ARIAL BOLD, 12 PT., ALIGN RIGHT.

ITEM #0000000

PRODUCT NAME

MODEL #0000000


Français / Español p. XX



FPO

ATTACH YOUR RECEIPT HERE

Serial Number _____ Purchase Date _____

**Questions, problems, missing parts?** Before returning to your retailer, call our customer service department at 1-XXX-XXX-XXXX, X a.m. - X p.m., EST, Monday - Friday.

INSERT PAGE NUMBER
(6 PT. ARIAL REGULAR, CENTERED)
FOR ALL PAGES INCLUDING COVERS.

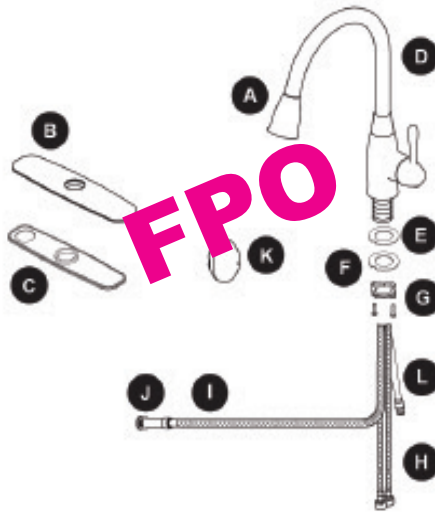
USE HIGH-RESOLUTION LINE
ART (300 dpi) OF FULLY ASSEMBLED
PRODUCT.

Questions, problems, missing parts? Before returning to your retailer, call our customer service department at 1-XXX-XXX-XXXX, X a.m. - X p.m., EST, Monday - Friday.

FONT USAGE: ARIAL REGULAR & BOLD SHOULD BE USED FOR ALL TEXT.

PACKAGE CONTENTS:

1. EACH PART OF THE PRODUCT MUST BE IDENTIFIED IN THE PACKAGE CONTENTS LIST BY A LETTER (DO NOT USE NUMBERS). EACH PART LISTED MUST HAVE A CORRESPONDING PART LABELED ACCORDINGLY IN THE DRAWING.
2. NOTE PARTS THAT ARE PRE-ASSEMBLED IN THE DESCRIPTION.
3. DIAGRAMS MUST BE SHOWN IN HIGH-RESOLUTION (300 dpi) LINE ART.
4. THE PART DESCRIPTION USED MUST REMAIN CONSISTENT THROUGHOUT ENTIRE MANUAL.



PART		DESCRIPTION	QUANTITY
A	Descriptive text here		?
B	Descriptive text here		?
C	Descriptive text here		?
D	Descriptive text here		?
E	Descriptive text here		?
F	Descriptive text here		?
G	Descriptive text here		?
H	Descriptive text here		?
I	Descriptive text here		?
J	Descriptive text here		?
K	Descriptive text here		?
L	Descriptive text here		?

HARDWARE CONTENTS (shown actual size)



X

INSERT PAGE NUMBER _____
(6 PT. ARIAL REGULAR, CENTERED)
FOR ALL PAGES INCLUDING COVERS.

INSERT PACKAGE CONTENTS IN THE FORMAT SHOWN. DO NOT LIST HARDWARE IN THIS SECTION. LIST HARDWARE IN HARDWARE CONTENTS SECTION.

FONT USAGE: ARIAL REGULAR & BOLD SHOULD BE USED FOR ALL TEXT.

IMPORTANT: VENDOR REPRESENTS, WARRANTS AND AGREES THAT LABELING, DESIGN, PACKAGING, SPECIFICATIONS SHALL COMPLY IN ALL RESPECTS WITH ALL APPLICABLE LAWS AND STANDARDS.

INSERT DANGER, WARNING AND CAUTION TEXT, CONTINUE ON AS MANY PAGES AS NECESSARY. INCLUDE DANGERS, WARNINGS AND/OR CAUTIONS SPECIFIC TO THE PRODUCT. INCLUDE ANY WARNINGS/CAUTIONS THAT ARE REQUIRED BY LAW.

“DANGER” SHOULD ALERT READERS TO THE THREAT OF DEATH.

“WARNING” SHOULD ALERT READERS TO THE THREAT OF PERSONAL INJURY.

“CAUTION” SHOULD ALERT READERS TO THE POSSIBILITY OF PRODUCT OR PROPERTY DAMAGE.

SAFETY INFORMATION

Please read and understand this entire manual before attempting to assemble, operate or install the product.

WARNING

- Place warning text here.
- Place warning text here.
- Place warning text here.

CAUTION

- Place caution text here.

PREPARATION

Before beginning assembly of product, make sure all parts are present. Compare parts with package contents list and hardware contents list. If any part is missing or damaged, do not attempt to assemble the product.

Estimated Assembly Time: XX minutes

Tools Required for Assembly (not included): [List here tools that are required but not included.](#)
Example: Wrench, Phillips Head Screwdriver, Hammer, Pliers

Helpful Tools (not included): [List here tools that are helpful but not included.](#) Otherwise delete this section.

X

INSERT PAGE NUMBER _____
(6 PT. ARIAL REGULAR, CENTERED)
FOR ALL PAGES INCLUDING COVERS.

IT IS VERY IMPORTANT TO INCLUDE —
THE ACTUAL ESTIMATED TIME NEEDED
TO ASSEMBLE THE PRODUCT.

FONT USAGE: ARIAL REGULAR & BOLD SHOULD BE USED FOR ALL TEXT.

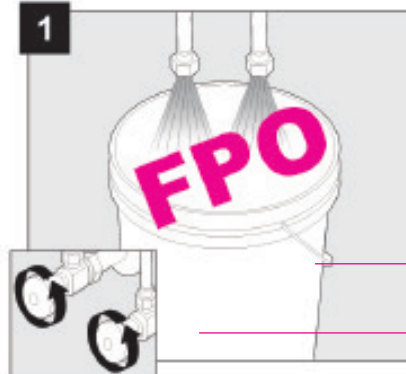
DIAGRAMS MUST BE NUMBERED AS (I.E.: 1, 2, 3, ETC.). THE ASSEMBLY INSTRUCTION ILLUSTRATED STEP MUST REFERENCE THE CORRESPONDING TEXT, AND THE LETTER USED TO REFERENCE THE PARTS IN THE PACKAGE CONTENTS LIST MUST COME IN THE TEXT RIGHT AFTER THE PART NAME (SEE BELOW).

INSTRUCTION TEXT MUST BE ON THE LEFT OF THE PAGE AND STEP DIAGRAMS ON THE RIGHT. INSTRUCTIONS MUST BE WRITTEN USING CLEAR, CONCISE STATEMENTS IN THE ACTIVE VOICE.

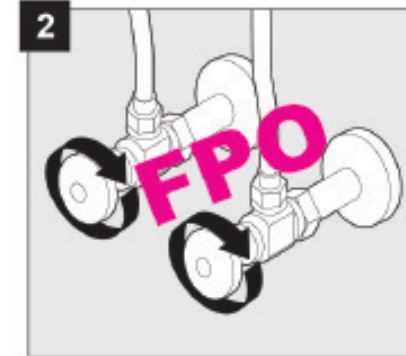
EXAMPLE: ATTACH LEG (A) TO FRAME (F) WITH M6x12 BOLTS (DD).

ASSEMBLY INSTRUCTIONS

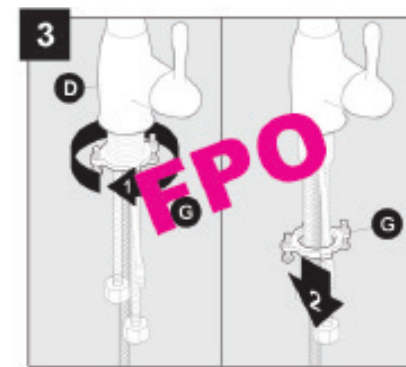
1. Insert instruction text here. Each diagram should have only one accompanying step.



2. Insert instruction text here. Each diagram should have only one accompanying step.



3. Insert instruction text here. Each diagram should have only one accompanying step.



BE SURE THE EXPLODED VIEW SHOWING THE HARDWARE USED IS LARGE ENOUGH FOR THE CUSTOMER TO EASILY UNDERSTAND.

INSERT PAGE NUMBER (6 PT. ARIAL REGULAR, CENTERED) FOR ALL PAGES INCLUDING COVERS.

INSERT LINE ART DIAGRAM TO ILLUSTRATE EACH ASSEMBLY STEP. EACH DIAGRAM MUST BE ENCLOSED WITH A 1 PT. RULED BOX, AND MAY HAVE ONLY ONE ACCOMPANYING STEP.
1. ALL PARTS AND HARDWARE REFERENCED IN DIAGRAMS MUST BE LABELED ACCORDING TO THE PACKAGE CONTENTS AND HARDWARE LISTS WITH THE CORRESPONDING LETTER OR LETTERS.
2. INSTRUCTION TEXT MUST REFERENCE PARTS WITH BOTH PART NAME AND CORRESPONDING LETTER.
3. DIAGRAMS MUST INCLUDE MAGNIFIED VIEW WHEN HARDWARE IS USED.

FONT USAGE: ARIAL REGULAR & BOLD SHOULD BE USED FOR ALL TEXT.

THIS HEADING MAY BE DELETED IF NOT NEEDED.

OPERATING INSTRUCTIONS

Insert operation instruction text if applicable.

CARE AND MAINTENANCE

• Insert care, maintenance, and/or storage instruction text if applicable.

• Insert care, maintenance, and/or storage instruction text if applicable.

• Insert care, maintenance, and/or storage instruction text if applicable.

TROUBLESHOOTING

PROBLEM	POSSIBLE CAUSE	CORRECTIVE ACTION
Insert problem text here.	<div>1. Insert text pertaining to possible cause of problem #1.</div> <div>2. Insert text pertaining to possible cause of problem #2.</div>	<div>1. Insert corrective action to be taken for problem #1.</div> <div>2. Insert corrective action to be taken for problem #2.</div>
Insert problem text here.	<div>1. Insert text pertaining to possible cause of problem #1.</div> <div>2. Insert text pertaining to possible cause of problem #2.</div>	<div>1. Insert corrective action to be taken for problem #1.</div> <div>2. Insert corrective action to be taken for problem #2.</div>

X

INSERT PAGE NUMBER
(6 PT. ARIAL REGULAR, CENTERED)
FOR ALL PAGES INCLUDING COVERS.

8

ACCORDING TO THE MAGNUSON-MOSS WARRANTY ACT, WARRANTIES MUST USE SIMPLE LANGUAGE AND STRUCTURE, A PERSONAL WRITING STYLE, AND CLEAR, UNDERSTANDABLE TERMS. WARRANTY MUST INCLUDE THE FOLLOWING INFORMATION:

1. MANUFACTURER'S NAME AND ADDRESS.
2. IS IT A FULL OR A LIMITED WARRANTY?
3. WHAT DOES THE WARRANTY COVER AND NOT COVER?
4. WHAT IS THE LENGTH OF COVERAGE?
5. WHAT WILL WARRANTOR DO TO CORRECT PROBLEM(S)?
6. HOW CAN THE CUSTOMER GET WARRANTY SERVICE?
7. HOW WILL STATE LAW AFFECT CUSTOMER'S RIGHTS?

FONT USAGE: ARIAL
REGULAR & BOLD
SHOULD BE USED FOR
ALL TEXT.

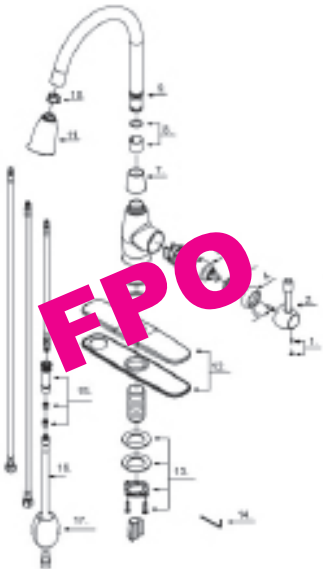
WARRANTY

Insert applicable warranty text here.

REPLACEMENT PARTS LIST

For replacement parts, call our customer service department at 1-XXX-XXX-XXXX, X a.m. - X p.m., EST, Monday - Friday.

PART	DESCRIPTION	PART #
1	Descriptive text here	?
2	Descriptive text here	?
3	Descriptive text here	?
4	Descriptive text here	?
5	Descriptive text here	?
6	Descriptive text here	?
7	Descriptive text here	?
8	Descriptive text here	?
9	Descriptive text here	?
10	Descriptive text here	?
11	Descriptive text here	?
12	Descriptive text here	?
13	Descriptive text here	?
14	Descriptive text here	?
15	Descriptive text here	?
16	Descriptive text here	?
17	Descriptive text here	?



Printed in Country

X

INSERT REPLACEMENT PARTS LIST.
EXTEND BOX AND LENGTHEN RULES TO INCLUDE ALL ITEMS.

LABELING LETTERS MUST MATCH PRIOR PACKAGE CONTENTS AND HARDWARE CONTENTS LIST.

INSERT PAGE NUMBER
(6 PT. ARIAL REGULAR, CENTERED)
FOR ALL PAGES INCLUDING COVERS.

INSERT COUNTRY
WHERE MANUAL
IS BEING PRINTED.

FONT USAGE: ARIAL REGULAR & BOLD SHOULD BE USED FOR ALL TEXT.

- 1. VENDOR IS TO REPLACE ® WITH TM IN LOGO WHEN APPLICABLE. THE SAME LOGO APPROVED FOR PACKAGING IS TO BE USED IN THIS INSTRUCTION MANUAL.
- 2. INSERT REGISTERED TRADEMARK NOTICE (BELOW LOGO) IF PRODUCT IS A ® LOGO MARK ONLY. TEXT IS 5 PT. ARIAL REGULAR, LINE SPACING (LEADING) IS 6 PT. ALIGN LEFT. **NOTE TO VENDOR:** PLACE THE **ACTUAL** BRAND NAME AS SEEN ON THE LOGO.

ITEM NO. AND MODEL NO. ARE ARIAL REGULAR, 6 PT., ALIGN RIGHT.

INSERT PRODUCT NAME (AS WRITTEN ON PACKAGING). ARIAL BOLD, 12 PT., ALIGN RIGHT.

Place logo in area shown. Scale logo to fit; if logo is horizontal, scale to fit width of box. If logo is vertical, scale logo to fit height of box.

INSERT CORRECT BRAND LOGO HERE


Brand Name® is a registered trademark of LF, LLC. All Rights Reserved.
Brand Name® is a registered trademark of LF, LLC. All Rights Reserved.




ITEM #0000000
PRODUCT NAME
MODEL #0000000

ITEM #0000000
PRODUCT NAME
MODEL #0000000

Translations begin with Canadian French followed by Latin American Spanish.

 **Questions, problems, missing parts?** Before returning to your retailer, call our customer service department at 1-XXX-XXX-XXXX, X a.m. - X p.m., EST, Monday - Friday.

 **Questions, problems, missing parts?** Before returning to your retailer, call our customer service department at 1-XXX-XXX-XXXX, X a.m. - X p.m., EST, Monday - Friday.

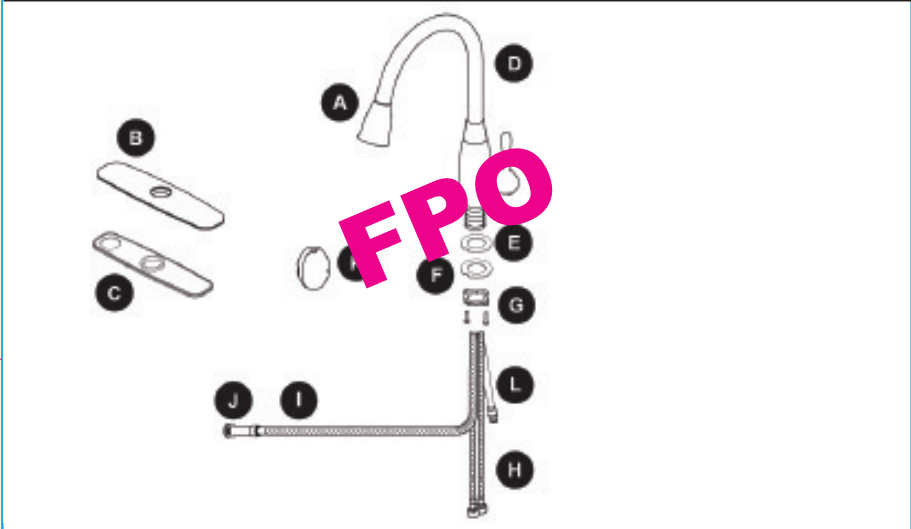
INSERT PAGE NUMBER (6 PT. ARIAL REGULAR, CENTERED) FOR ALL PAGES INCLUDING COVERS.

USE HIGH-RESOLUTION LINE ART (300 dpi) OF FULLY ASSEMBLED PRODUCT.

FONT USAGE: ARIAL REGULAR & BOLD SHOULD BE USED FOR ALL TEXT.


- PACKAGE CONTENTS:
- 1. EACH PART OF THE PRODUCT MUST BE IDENTIFIED IN THE PACKAGE CONTENTS LIST BY A LETTER (DO NOT USE NUMBERS). EACH PART LISTED MUST HAVE A CORRESPONDING PART LABELED ACCORDINGLY IN THE DRAWING.
 - 2. NOTE PARTS THAT ARE PRE-ASSEMBLED IN THE DESCRIPTION.
 - 3. DIAGRAMS MUST BE SHOWN IN HIGH-RESOLUTION (300 dpi) LINE ART.
 - 4. THE PART DESCRIPTION USED MUST REMAIN CONSISTENT THROUGHOUT ENTIRE MANUAL.

PACKAGE CONTENTS (French) / PACKAGE CONTENTS (Spanish)



PART PART	DESCRIPTION / DESCRIPTION	QUANTITY QUANTITY
A	Descriptive text here / Descriptive text here	?
B	Descriptive text here / Descriptive text here	?
C	Descriptive text here / Descriptive text here	?
D	Descriptive text here / Descriptive text here	?
E	Descriptive text here / Descriptive text here	?
F	Descriptive text here / Descriptive text here	?
G	Descriptive text here / Descriptive text here	?
H	Descriptive text here / Descriptive text here	?
I	Descriptive text here / Descriptive text here	?
J	Descriptive text here / Descriptive text here	?
K	Descriptive text here / Descriptive text here	?
L	Descriptive text here / Descriptive text here	?

HARDWARE CONTENTS (shown actual size) (French) / HARDWARE CONTENTS (shown actual size) (Spanish)



Hex Wrench
x 1

X

INSERT PAGE NUMBER
(6 PT. ARIAL REGULAR, CENTERED)
FOR ALL PAGES INCLUDING COVERS.

INSERT PACKAGE CONTENTS IN
THE FORMAT SHOWN. DO NOT LIST
HARDWARE IN THIS SECTION.
LIST HARDWARE IN HARDWARE
CONTENTS SECTION.

FONT USAGE: ARIAL REGULAR & BOLD SHOULD BE USED FOR ALL TEXT.

IMPORTANT: VENDOR REPRESENTS, WARRANTS AND AGREES THAT LABELING, DESIGN, PACKAGING, SPECIFICATIONS SHALL COMPLY IN ALL RESPECTS WITH ALL APPLICABLE LAWS AND STANDARDS.

INSERT DANGER, WARNING AND CAUTION TEXT, CONTINUE ON AS MANY PAGES AS NECESSARY. INCLUDE DANGERS, WARNINGS AND/OR CAUTIONS SPECIFIC TO THE PRODUCT. INCLUDE ANY WARNINGS/CAUTIONS THAT ARE REQUIRED BY LAW.

"DANGER" SHOULD ALERT READERS TO THE THREAT OF DEATH.

"WARNING" SHOULD ALERT READERS TO THE THREAT OF PERSONAL INJURY.

"CAUTION" SHOULD ALERT READERS TO THE POSSIBILITY OF PRODUCT OR PROPERTY DAMAGE.



SAFETY INFORMATION (French) / SAFETY INFORMATION (Spanish)

Please read and understand this entire manual before attempting to assemble, operate or install the product.

WARNING

- Place warning text here.
- Place warning text here.
- Place warning text here.

CAUTION

- Place caution text here.

Please read and understand this entire manual before attempting to assemble, operate or install the product.

WARNING

- Place warning text here.
- Place warning text here.
- Place warning text here.

CAUTION

- Place caution text here.

PREPARATION (French) / PREPARATION (Spanish)

Before beginning assembly of product, make sure all parts are present. Compare parts with package contents list and hardware contents list. If any part is missing or damaged, do not attempt to assemble the product.

Estimated Assembly Time: XX minutes

Tools Required for Assembly (not included): List here tools that are required but not included. Example: Wrench, Phillips Head Screwdriver, Hammer, Pliers

Helpful Tools (not included): List here tools that are helpful but not included. Otherwise delete this section.

Before beginning assembly of product, make sure all parts are present. Compare parts with package contents list and hardware contents list. If any part is missing or damaged, do not attempt to assemble the product.

Estimated Assembly Time: XX minutes

Tools Required for Assembly (not included): List here tools that are required but not included. Example: Wrench, Phillips Head Screwdriver, Hammer, Pliers

Helpful Tools (not included): List here tools that are helpful but not included. Otherwise delete this section.

X

INSERT PAGE NUMBER
(6 PT. ARIAL REGULAR, CENTERED)
FOR ALL PAGES INCLUDING COVERS.

FONT USAGE: ARIAL REGULAR & BOLD SHOULD BE USED FOR ALL TEXT.

DIAGRAMS MUST BE NUMBERED AS (I.E.: 1, 2, 3, ETC.). THE ASSEMBLY INSTRUCTION ILLUSTRATED STEP MUST REFERENCE THE CORRESPONDING TEXT, AND THE LETTER USED TO REFERENCE THE PARTS IN THE PACKAGE CONTENTS LIST MUST COME IN THE TEXT RIGHT AFTER THE PART NAME.

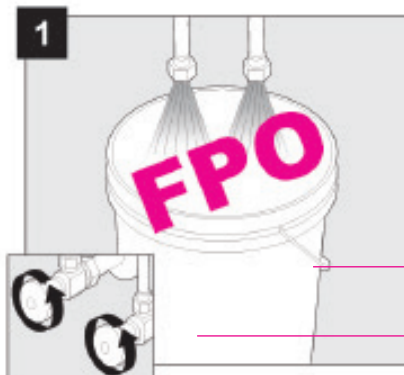
INSTRUCTION TEXT MUST BE ON THE LEFT OF THE PAGE AND STEP DIAGRAMS ON THE RIGHT. INSTRUCTIONS MUST BE WRITTEN USING CLEAR, CONCISE STATEMENTS IN THE ACTIVE VOICE.

EXAMPLE: ATTACH LEG (A) TO FRAME (F) WITH M6x12 BOLTS (DD).

ASSEMBLY INSTRUCTIONS (French) / ASSEMBLY INSTRUCTIONS (Spanish)

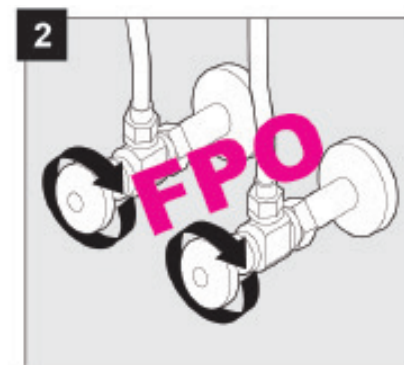
1. Insert instruction text here. Each diagram should have only one accompanying step.

Insert instruction text here. Each diagram should have only one accompanying step.



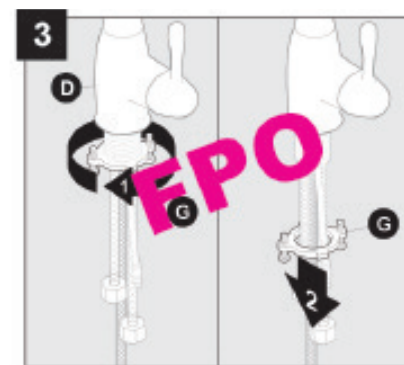
2. Insert instruction text here. Each diagram should have only one accompanying step.

Insert instruction text here. Each diagram should have only one accompanying step.



3. Insert instruction text here. Each diagram should have only one accompanying step.

Insert instruction text here. Each diagram should have only one accompanying step.



BE SURE THE EXPLODED VIEW SHOWING THE HARDWARE USED IS LARGE ENOUGH FOR THE CUSTOMER TO EASILY UNDERSTAND.

INSERT PAGE NUMBER (6 PT. ARIAL REGULAR, CENTERED) FOR ALL PAGES INCLUDING COVERS.

INSERT LINE ART DIAGRAM TO ILLUSTRATE EACH ASSEMBLY STEP. EACH DIAGRAM MUST BE ENCLOSED WITH A 0.5 PT. RULED BOX, AND MAY HAVE ONLY ONE ACCOMPANYING STEP.
1. ALL PARTS AND HARDWARE REFERENCED IN DIAGRAMS MUST BE LABELED ACCORDING TO THE PACKAGE CONTENTS AND HARDWARE LISTS WITH THE CORRESPONDING LETTER OR LETTERS.
2. INSTRUCTION TEXT MUST REFERENCE PARTS WITH BOTH PART NAME AND CORRESPONDING LETTER.
3. DIAGRAMS MUST INCLUDE MAGNIFIED VIEW WHEN HARDWARE IS USED.

FONT USAGE: ARIAL REGULAR & BOLD SHOULD BE USED FOR ALL TEXT.

THIS HEADING MAY BE DELETED IF NOT NEEDED.

OPERATING INSTRUCTIONS (French) / OPERATING INSTRUCTIONS (Spanish)

Insert operation instruction text if applicable.

Insert operation instruction text if applicable.

CARE AND MAINTENANCE (French) / CARE AND MAINTENANCE (Spanish)

- Insert care, maintenance, and/or storage instruction text if applicable.
- Insert care, maintenance, and/or storage instruction text if applicable.
- Insert care, maintenance, and/or storage instruction text if applicable.
- Insert care, maintenance, and/or storage instruction text if applicable.
- Insert care, maintenance, and/or storage instruction text if applicable.
- Insert care, maintenance, and/or storage instruction text if applicable.

X

INSERT PAGE NUMBER
(6 PT. ARIAL REGULAR,
CENTERED) FOR ALL PAGES
INCLUDING COVERS.

FONT USAGE: ARIAL REGULAR & BOLD SHOULD BE USED FOR ALL TEXT.

THIS HEADING MAY BE DELETED IF NOT NEEDED.

INSERT TROUBLESHOOTING TEXT IN TABLE STYLE AS SHOWN HERE. EXTEND BOX AND LENGTHEN RULES AS NECESSARY.

TROUBLESHOOTING (French) / TROUBLESHOOTING (Spanish)		
PROBLEM PROBLEM	POSSIBLE CAUSE POSSIBLE CAUSE	CORRECTIVE ACTION CORRECTIVE ACTION
Insert problem text here. Insert problem text here.	1. Insert text pertaining to possible cause of problem #1. Insert text pertaining to possible cause of problem #1. 2. Insert text pertaining to possible cause of problem #2. Insert text pertaining to possible cause of problem #2.	1. Insert corrective action to be taken for problem #1. Insert corrective action to be taken for problem #1. 2. Insert corrective action to be taken for problem #2. Insert corrective action to be taken for problem #2.
Insert problem text here. Insert problem text here.	1. Insert text pertaining to possible cause of problem #1. Insert text pertaining to cause of problem #1. 2. Insert text pertaining to possible cause of problem #2. Insert text pertaining to possible cause of problem #2.	1. Insert corrective action to be taken for problem #1. Insert corrective action to be taken for problem #1. 2. Insert corrective action to be taken for problem #2. Insert corrective action to be taken for problem #2.

Text for "Cause" and "Corrective Action" needs to align across columns.

X

INSERT PAGE NUMBER
 (6 PT. ARIAL REGULAR, CENTERED)
 FOR ALL PAGES INCLUDING COVERS.

FONT USAGE: ARIAL REGULAR & BOLD SHOULD BE USED FOR ALL TEXT.

- ACCORDING TO THE MAGNUSON-MOSS WARRANTY ACT, WARRANTIES MUST USE SIMPLE LANGUAGE AND STRUCTURE, A PERSONAL WRITING STYLE, AND CLEAR, UNDERSTANDABLE TERMS. WARRANTY MUST INCLUDE THE FOLLOWING INFORMATION:
- 1. MANUFACTURER'S NAME AND ADDRESS.
 - 2. IS IT A FULL OR A LIMITED WARRANTY?
 - 3. WHAT DOES THE WARRANTY COVER AND NOT COVER?
 - 4. WHAT IS THE LENGTH OF COVERAGE?
 - 5. WHAT WILL WARRANTOR DO TO CORRECT PROBLEM(S)?
 - 6. HOW CAN THE CUSTOMER GET WARRANTY SERVICE?
 - 7. HOW WILL STATE LAW AFFECT CUSTOMER'S RIGHTS?

WARRANTY (French) / WARRANTY (Spanish)

Insert applicable warranty text here.
Insert applicable warranty text here.

X

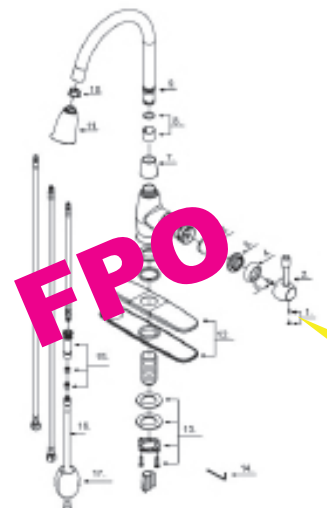
INSERT PAGE NUMBER
(6 PT. ARIAL REGULAR, CENTERED)
FOR ALL PAGES INCLUDING COVERS.

FONT USAGE: ARIAL REGULAR & BOLD SHOULD BE USED FOR ALL TEXT.

REPLACEMENT PARTS LIST (French) / REPLACEMENT PARTS LIST (Spanish)

For replacement parts, call our customer service department at 1-XXX-XXX-XXXX, X a.m. - X p.m., EST, Monday - Friday.

For replacement parts, call our customer service department at 1-XXX-XXX-XXXX, X a.m. - X p.m., EST, Monday - Friday.



PART PART	DESCRIPTION / DESCRIPTION	PART # PART #
1	Descriptive text here / Descriptive text here	?
2	Descriptive text here / Descriptive text here	?
3	Descriptive text here / Descriptive text here	?
4	Descriptive text here / Descriptive text here	?
5	Descriptive text here / Descriptive text here	?
6	Descriptive text here / Descriptive text here	?
7	Descriptive text here / Descriptive text here	?
8	Descriptive text here / Descriptive text here	?
9	Descriptive text here / Descriptive text here	?
10	Descriptive text here / Descriptive text here	?
11	Descriptive text here / Descriptive text here	?
12	Descriptive text here / Descriptive text here	?
13	Descriptive text here / Descriptive text here	?
14	Descriptive text here / Descriptive text here	?
15	Descriptive text here / Descriptive text here	?
16	Descriptive text here / Descriptive text here	?
17	Descriptive text here / Descriptive text here	?

Printed in Country (French)

Printed in Country (Spanish)

X

Exploded, high-resolution diagram of product with labeled parts according to replacement parts list.

Raster line art (jpegs, tifs, etc) should be high-resolution (300 dpi or greater) at full size. Vector line art (eps, ai, etc.) line weight no lower than 0.25 points or greater at full size.

INSERT REPLACEMENT PARTS LIST. EXTEND BOX AND LENGTHEN RULES TO INCLUDE ALL ITEMS.

LABELING LETTERS MUST MATCH PRIOR PACKAGE CONTENTS AND HARDWARE CONTENTS LIST.

INSERT PAGE NUMBER (6 PT. ARIAL REGULAR, CENTERED) FOR ALL PAGES INCLUDING COVERS.