

Loweslink® Digital Certificate System Requirements

To ensure that your certificate installs with ease, please be sure that your computer meets the following conditions:

A. Your internet browser is **Internet Explorer Version 6** or later. [Click here to check](#)

****NOTE:** IF YOU ARE USING INTERNET EXPLORER **VERSION 7** or **VERSION 8** YOU MUST FOLLOW THESE INSTRUCTIONS TO USE LOWESLINK®:

[Click here to use Internet Explorer 7 or 8](#)

B. You have installed the latest **Java** software from Sun Microsystems. It is highly recommended that you remove any previous versions that you do not need. If in doubt, please contact your own IT help desk.

[Sun Java Installation Guidelines](#)

Get the latest Java from <http://www.java.com/en>

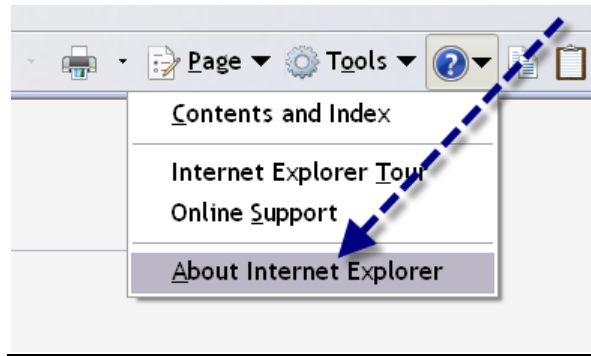
C. You have **administrative rights** to your computer with permission to install the software and the certificate.

IF you meet these requirements, continue your registration for LowesLink® by clicking here:

[Click Here to Continue Registration](#)

Check your Internet Explorer for version number

From the top of an Internet Explorer page, choose HELP>ABOUT INTERNET EXPLORER to find out version number.

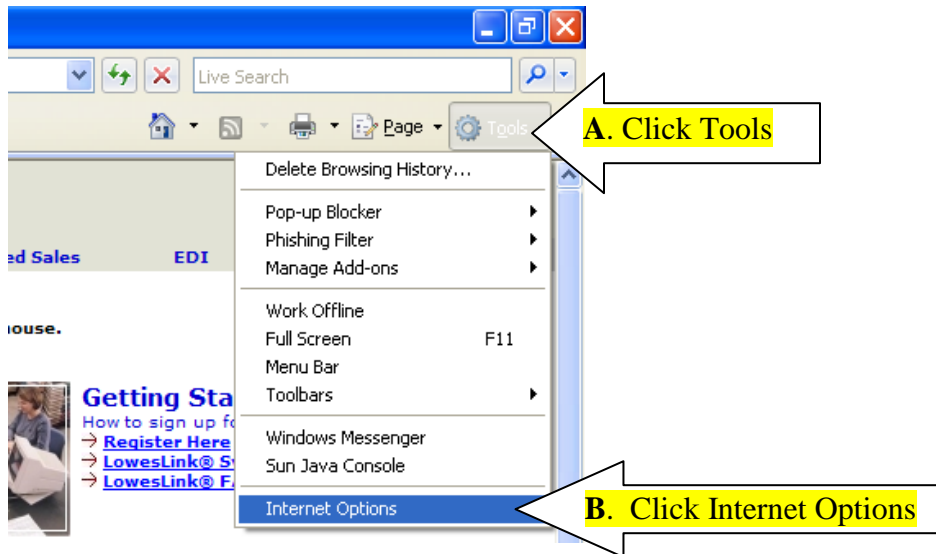


Using Internet Explorer versions 7 and 8 with LowesLink®

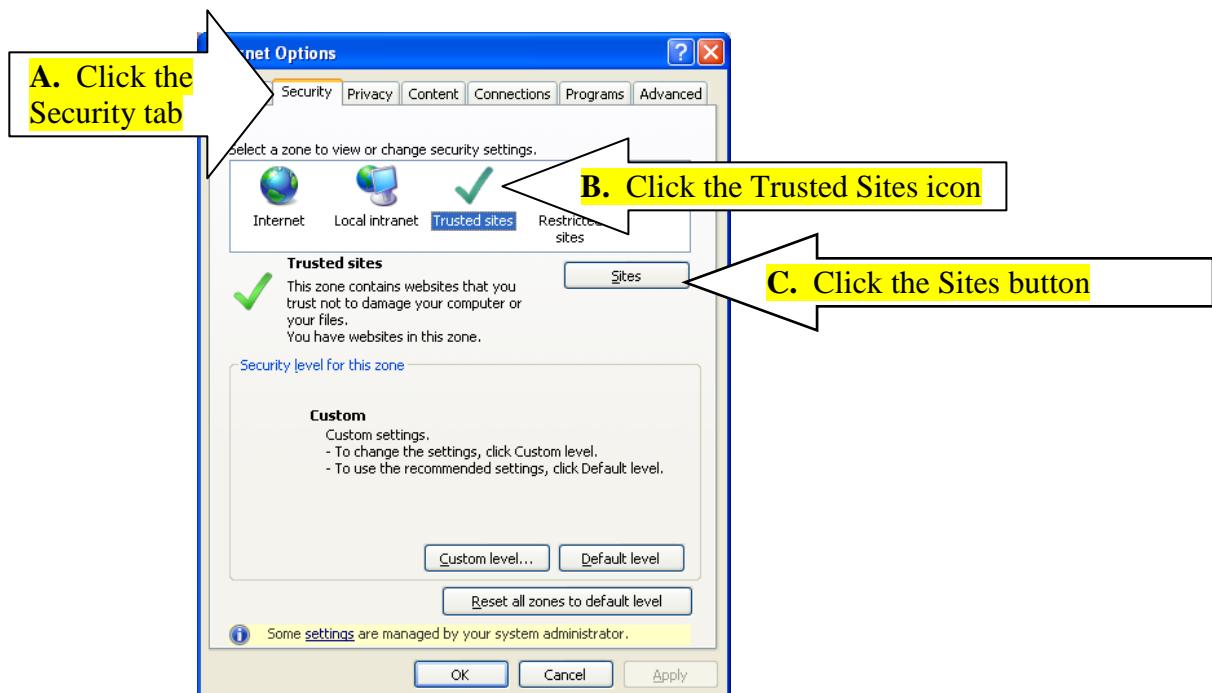
Although Internet Explorer 7 or 8 should work with LowesLink®, some LowesLink® applications may not run optimally.

If you are using Internet Explorer Version 7 or 8 to access LowesLink®, you will need to follow the instructions below to modify your security settings.

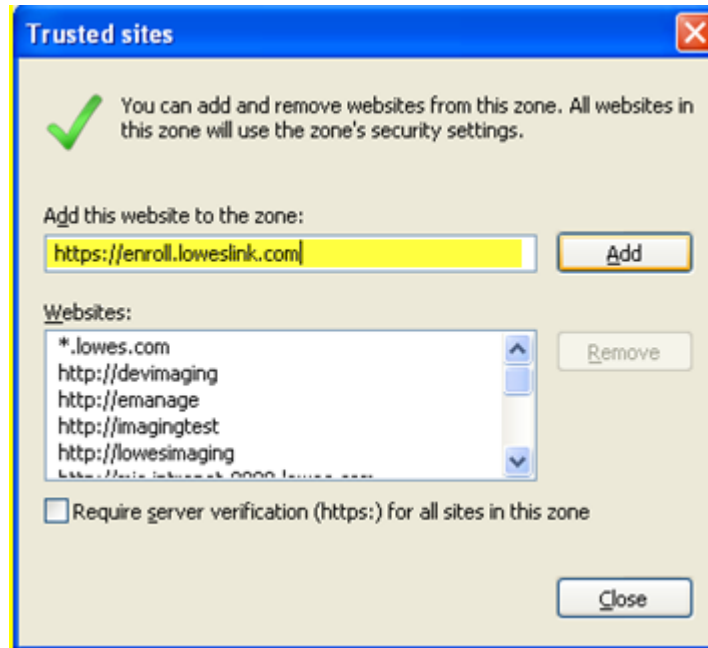
1. Open Internet Explorer and click Tools>Internet Options.



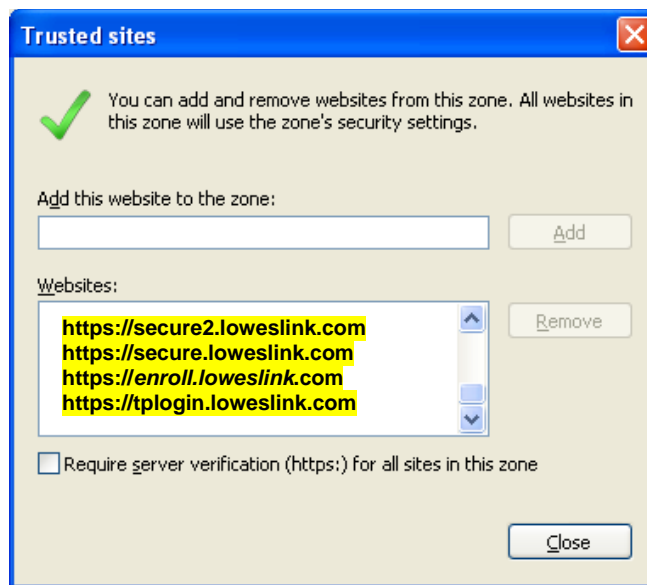
2. From the Internet Options window, click the Security tab, then click the Trusted Sites Icon, and click the Sites button as shown below.



3. Type **https://enroll.loweslink.com** in the "Add this website to the zone:" field and click **Add**.
4. Type **https://tplogin.loweslink.com** in the "Add this website to the zone:" field and click **Add**.
5. Type **https://secure.loweslink.com** in the "Add this website to the zone:" field and click **Add**.
6. Type **https://secure2.loweslink.com** in the "Add this website to the zone:" field and click **Add**.



7. Insure the four sites under the **Websites:** list match the picture below. Then, click **Close**.



8. Finally, click **OK** on the Internet Options window and then restart your browser.
[Return to Page 1](#)