



Access Point Guidelines

Effective date: 10/26/2010

Access Point Guidelines-Overview:

The purpose of this document is to help develop packaging that is *easiest* for the Lowe's customer to pickup and convey from the store shelves, to checkout, and then to the customer's vehicle. Packaging that is easy to convey, and also maintains its "new" appearance, provides a better customer shopping experience and improves the perceived value of your product.

Adequate Access Point performance allows the package to be pulled horizontally from the shelf or along the floor as well as picked up vertically from the shelf or floor without tearing, damaging or compromising the packaging.

This guide will help you determine:

- ✓ if Access Points should be considered in your package design.
- ✓ how many should be used and where should they be located.
- ✓ how they can be reinforced to prevent failures and damage.
- ✓ what styles are best for your package configuration.

Access Point Check List:

- Determine if Access Points should be considered.....1
- Determine how to incorporate access points.....1-8
 - Are more than two access points required?.....1
 - Is reinforcing necessary3
 - Inside the corrugated board.....3
 - Outside the corrugated board.....3
 - Plastic Inserts.....3
 - Are Access Point flaps able to swing 180° inside the package?.....4
 - Are Access points synchronized?.....4-7
 - Synchronize with interior packaging.....4-5
 - Synchronize the position with the product within.....6
 - Are Access Points positioned at least 2" from corners?.....8
- Determine the best access point style.....9

Determining if Access Points are Necessary

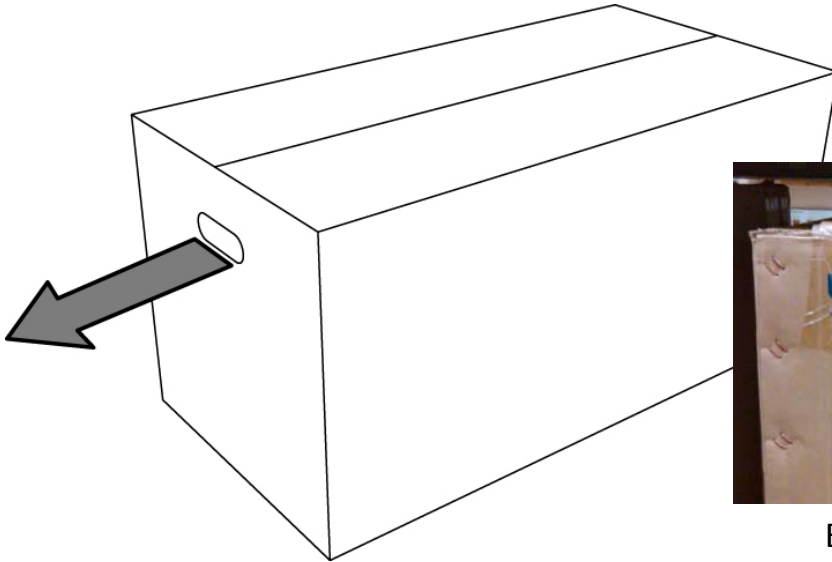
When to Use Access Points and How Many:

The purpose of this guide is to help decide whether Access Points are necessary and if so, how many should be considered. Compare the packaging weight (top row) to the packaging dimensions (left column) to determine how many Access Points the package should have.

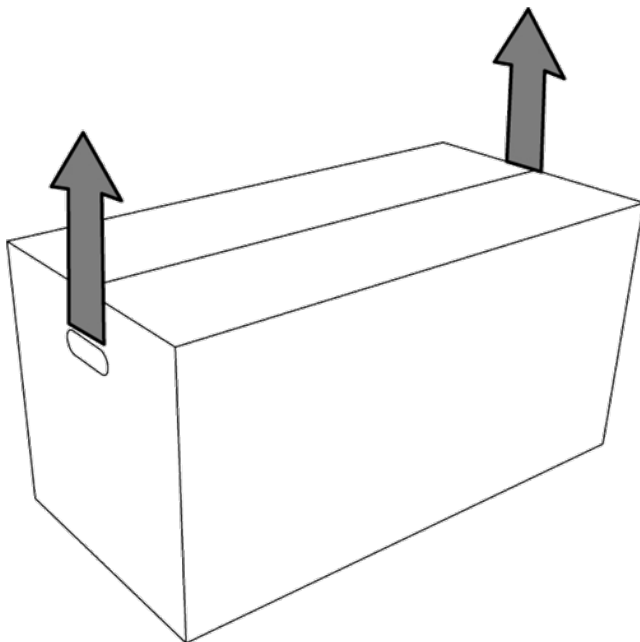
Access Point Guide	<30lbs. (13.6kg)	30-70lbs. (13.6-31.7kg)	70-140lbs (31.7- 63.5kg)
largest dimension <=24" 2nd largest dimension <=18"	No Access Points required	No Access Points required	At least 4 Access Points (for two person lift)
largest dimension >24" 2nd largest dimension <=18	No Access Points required	No Access Points required	At least 4 Access Points (for two person lift)
largest dimension >=50" 2nd largest dimension >=24"	At least 4 Access Points (for two person lift)	At least 4 Access Points (for two person lift)	At least 4 Access Points (for two person lift)

Access Point Performance

Access Points must be adequately reinforced to allow carton to be pulled horizontally from shelf or along floor without tearing or causing damage.



Example of damaged carton when pulled from shelf location

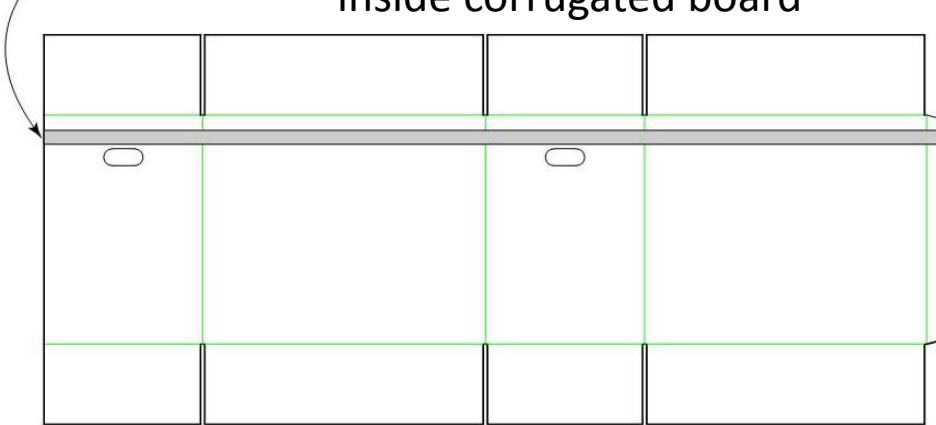


Access Points must be adequately reinforced to allow carton to be picked up from shelf location or cart, and to be conveyed to checkout and customer vehicle, vertically from shelf or along floor without tearing or causing damage.

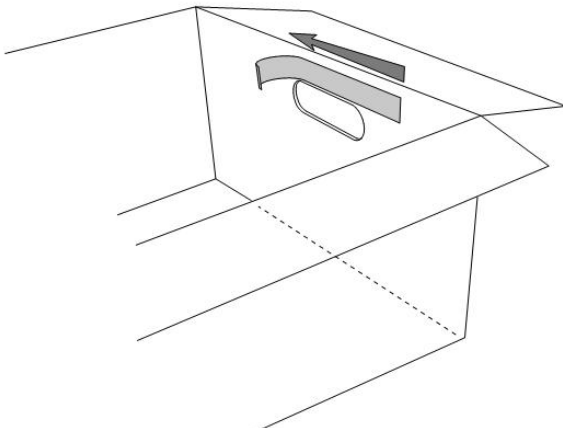


Reinforcing Methods

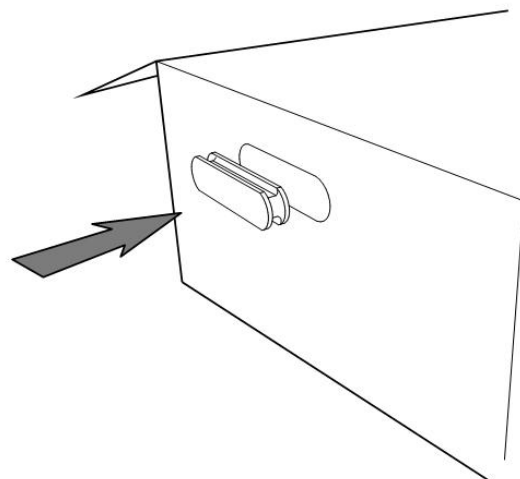
1. Reinforcing Tape buried inside corrugated board



2. Reinforcing Tape strip applied inside corrugated box



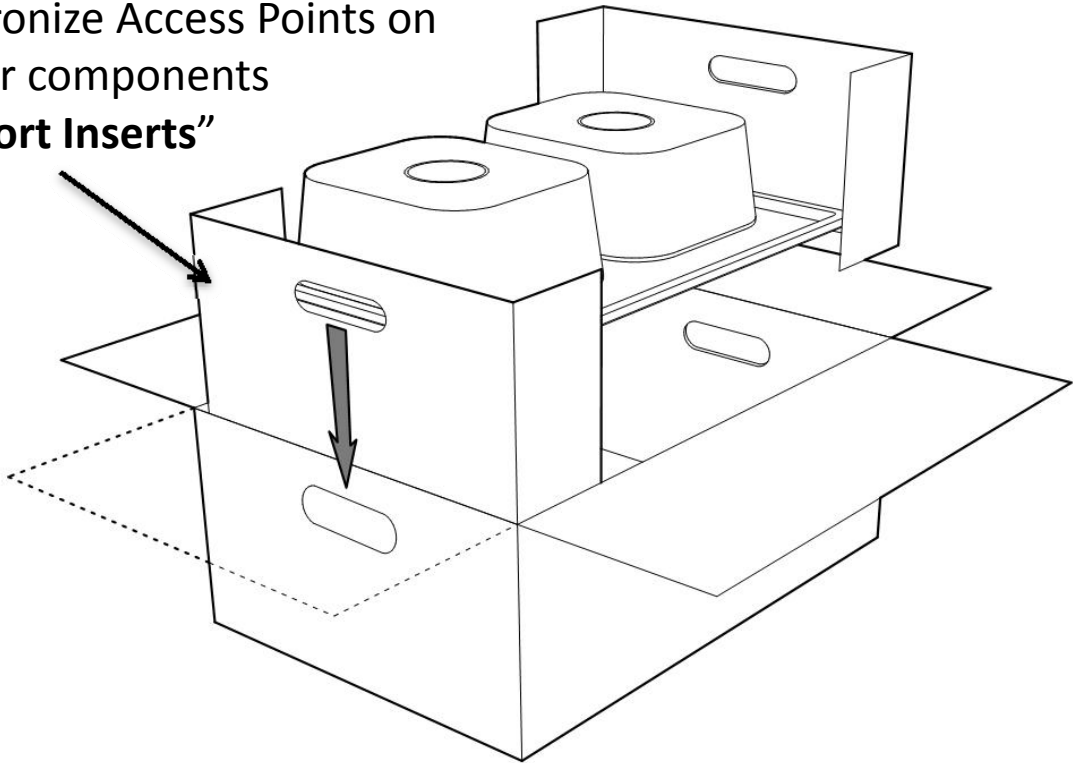
3. Plastic Insert



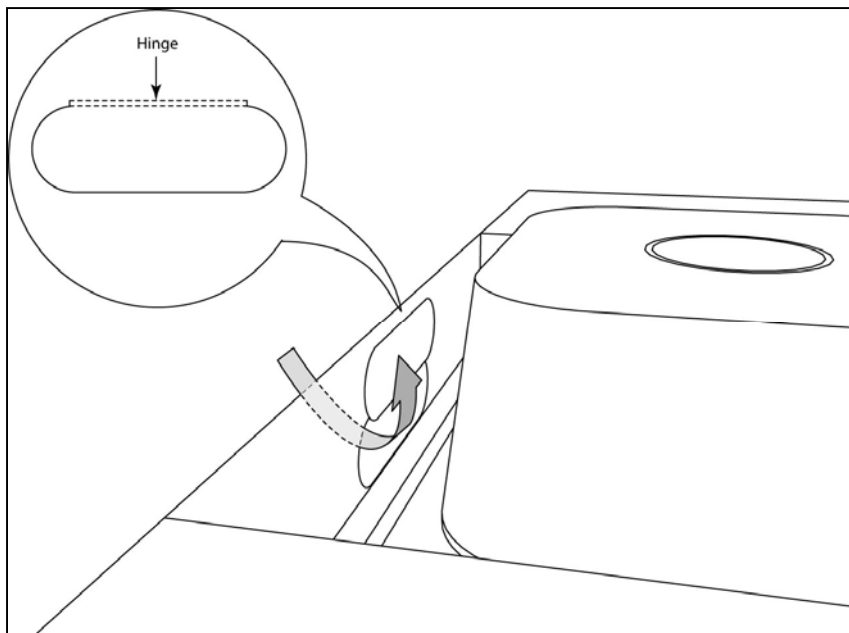
Reinforcing Methods

Synchronize Access Points on interior components

“Support Inserts”



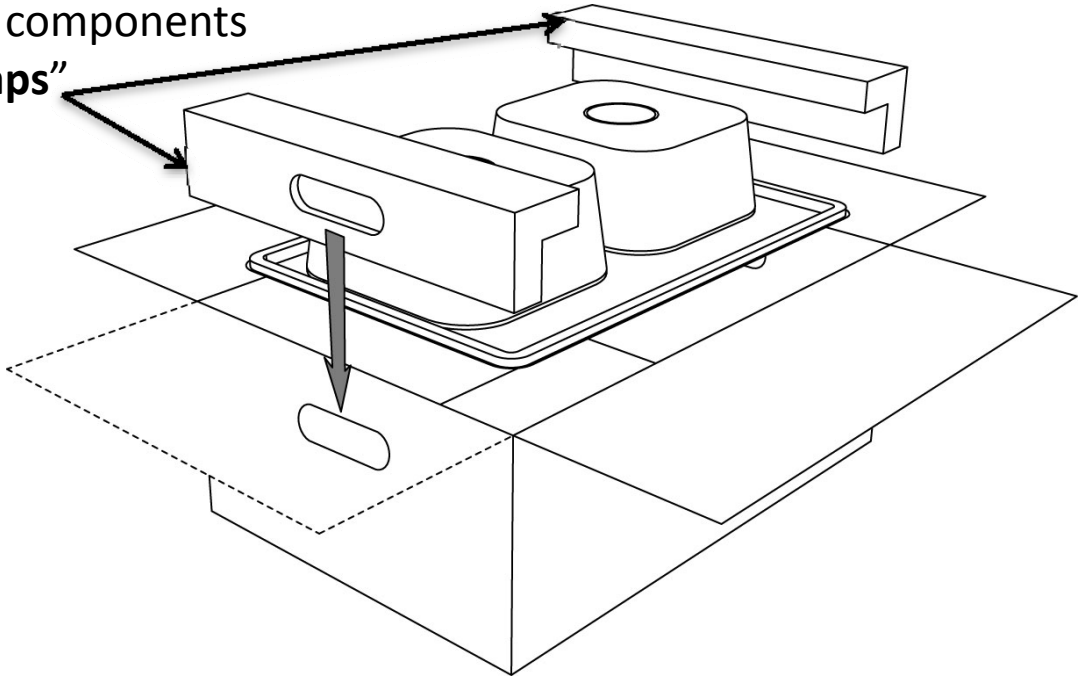
Hinge flap should easily swing inside and rotate 180 degrees



Reinforcing Methods

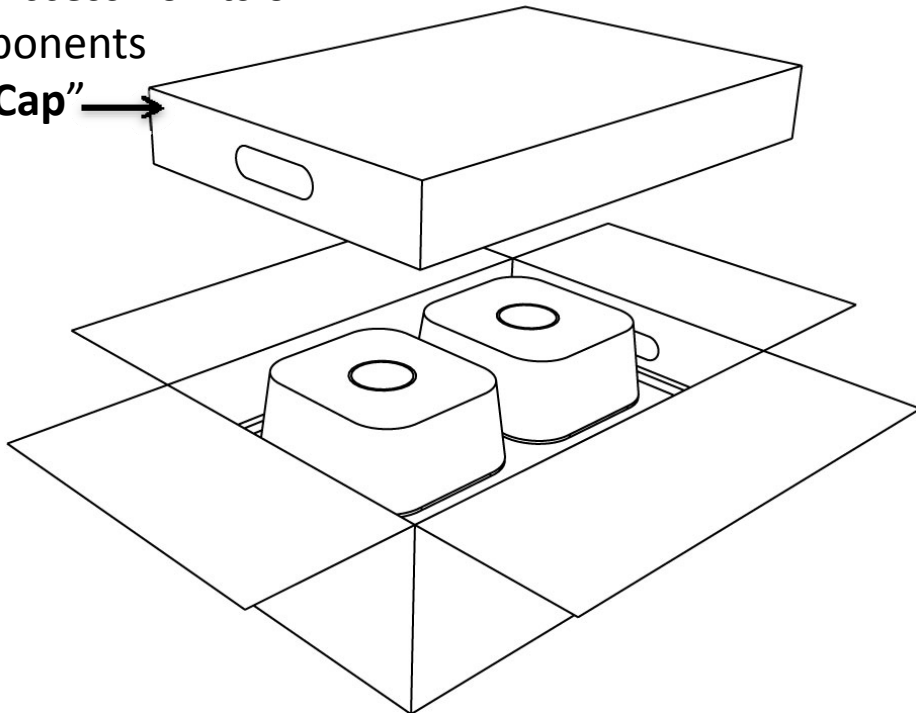
Synchronize Access Points on interior components

“End Caps”



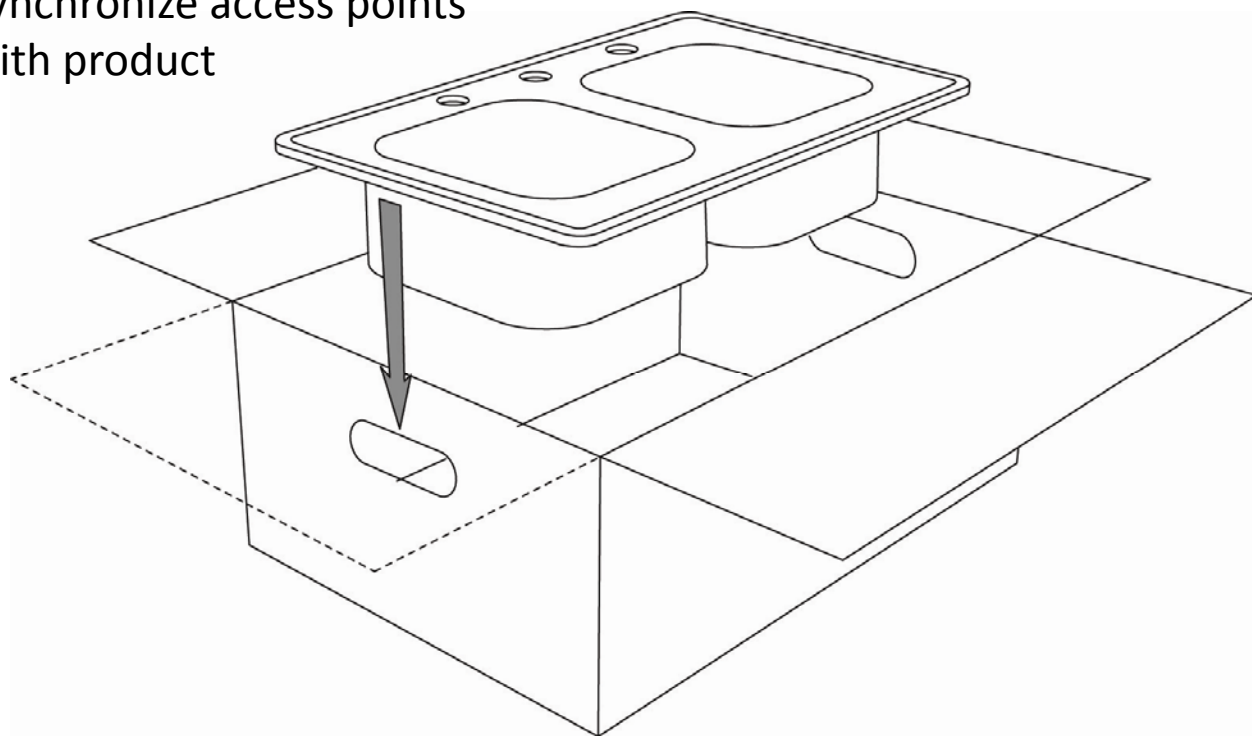
Synchronize Access Points on interior components

“Top Pad or Cap”

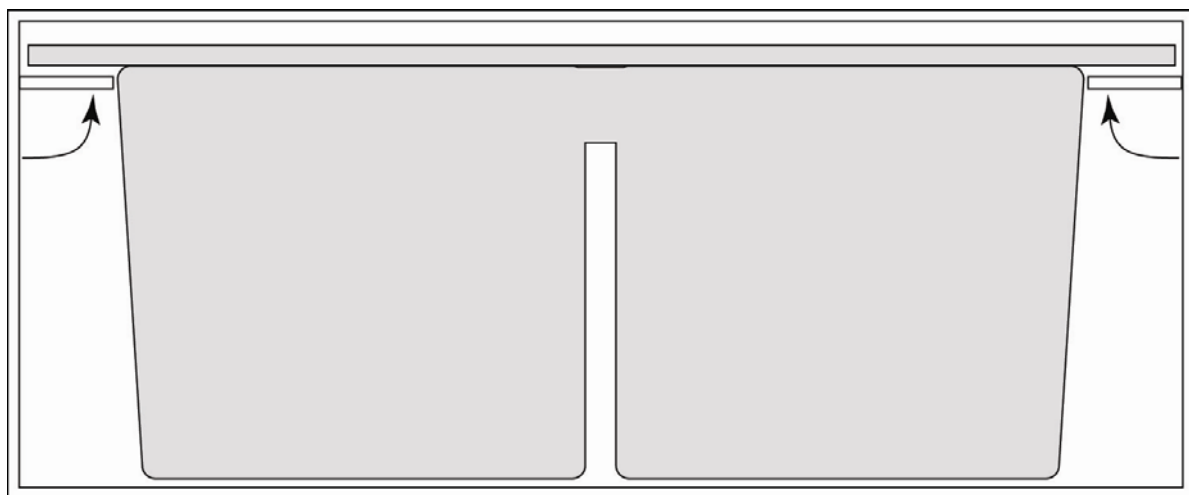


Reinforcing Methods

Synchronize access points
with product



Hinge flap should easily swing inside and rotate 90 degrees

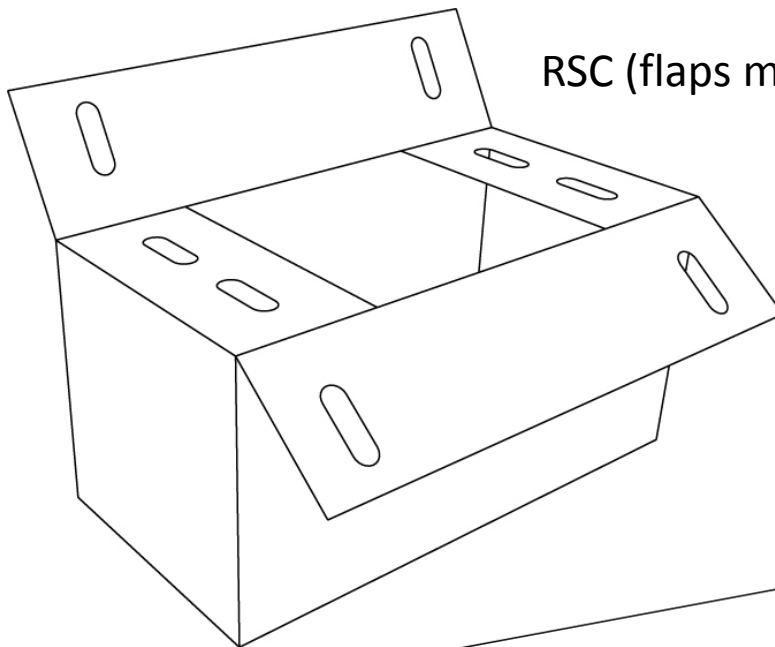


Utilizing Flap Material for Access Points

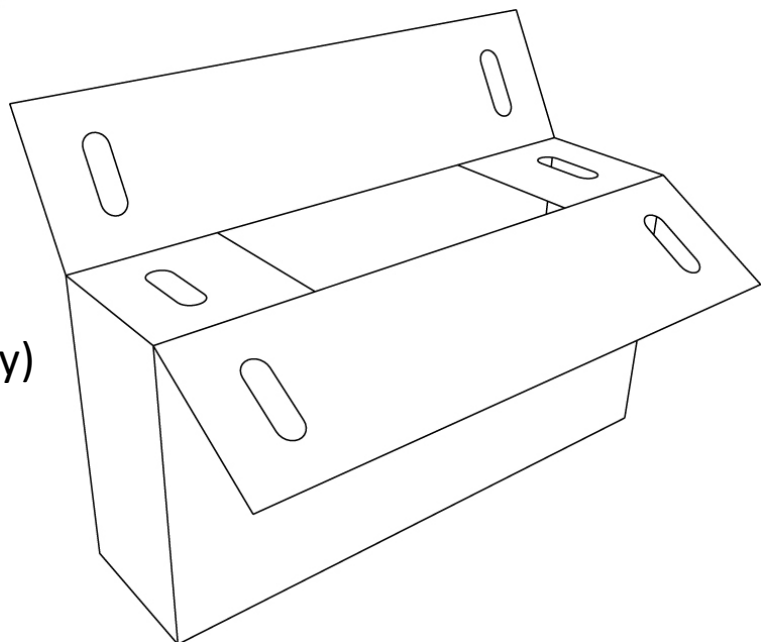
RSC (Regular Slotted Container)

FOL(Full Overlap Flaps)

Locate Access Points on the overlapping flaps of carton closure to increase reinforcement

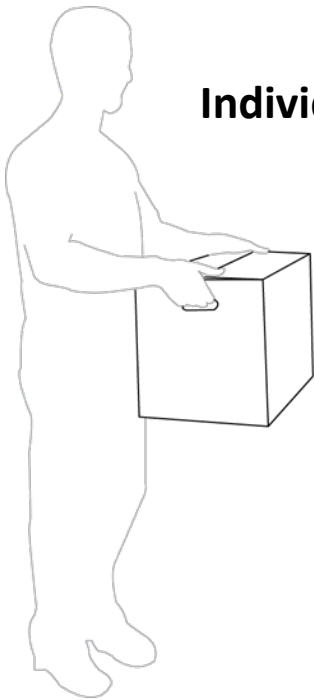


RSC (flaps meet at center)



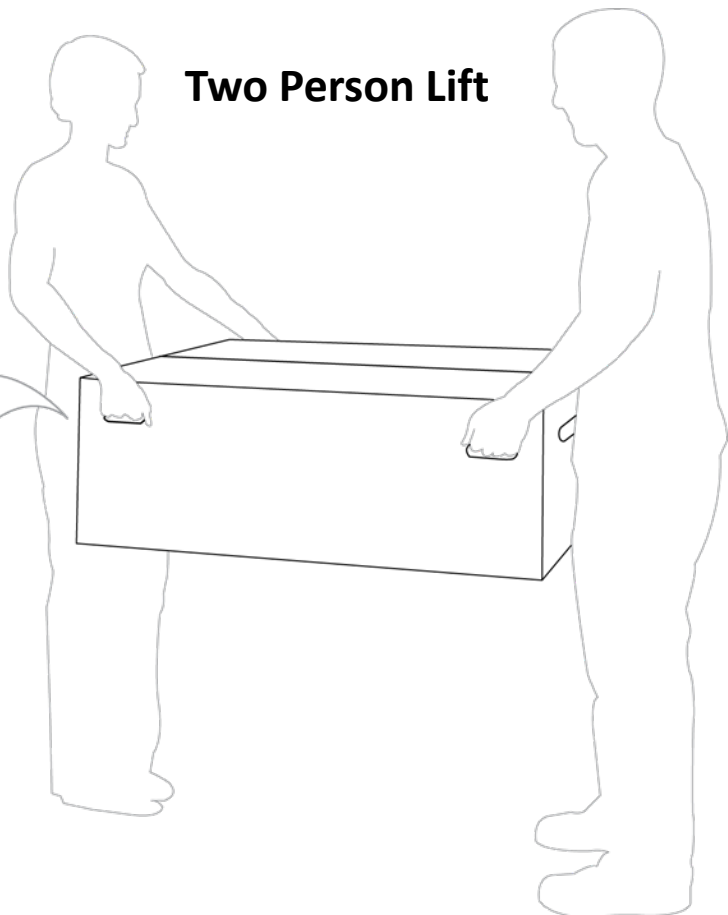
FOL (flaps overlap fully)

Use additional Access Points

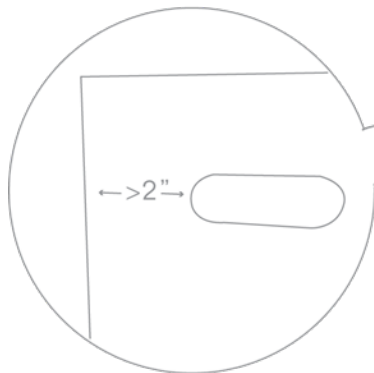


Individual lift

Position Access Points for individual lift. If distance between 2-Access Points is too great for individual lift, re-position with additional Access Points for team lift.



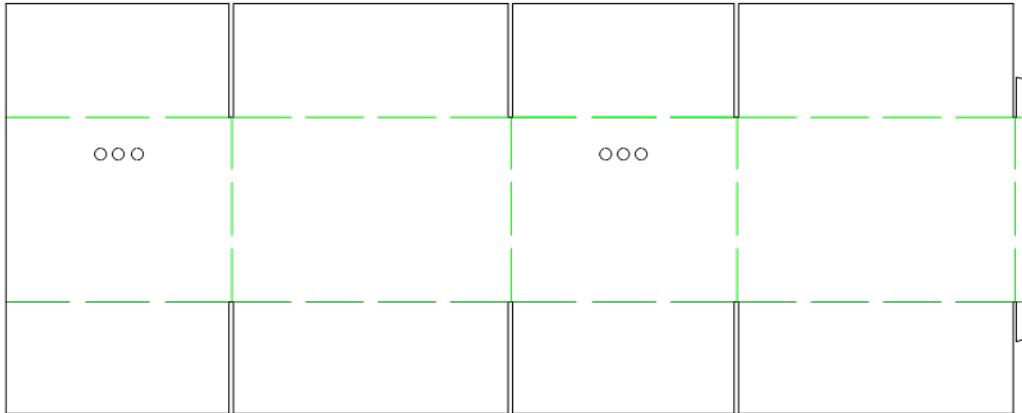
Two Person Lift



Position Access Points no closer than 2" from carton corners

Alternative Access Point Styles

Finger holes (3) to reduce tears



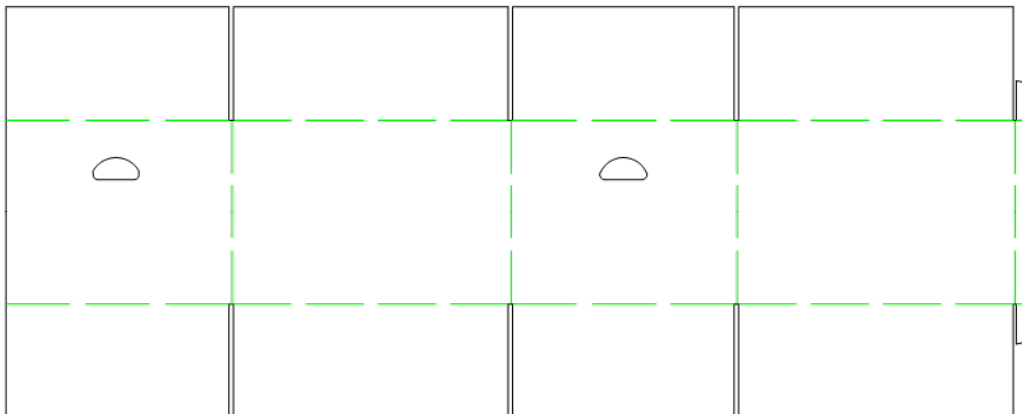
Nicked in



Cut out



Arched Access Point to reduce tears with easier use



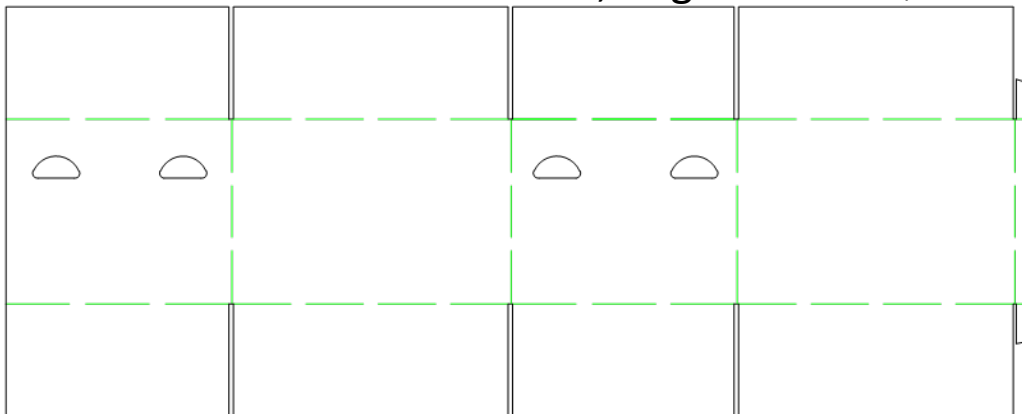
Hinged



Cut out



2- Access Points for heavier, larger cartons (See Matrix Page 1)



Hinged



Cut out

