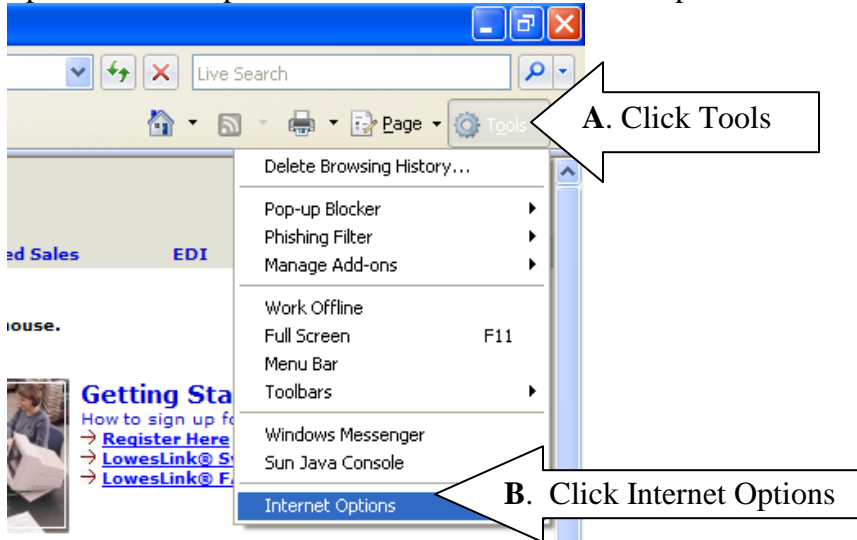


Using Internet Explorer versions 7 and 8 with LowesLink®

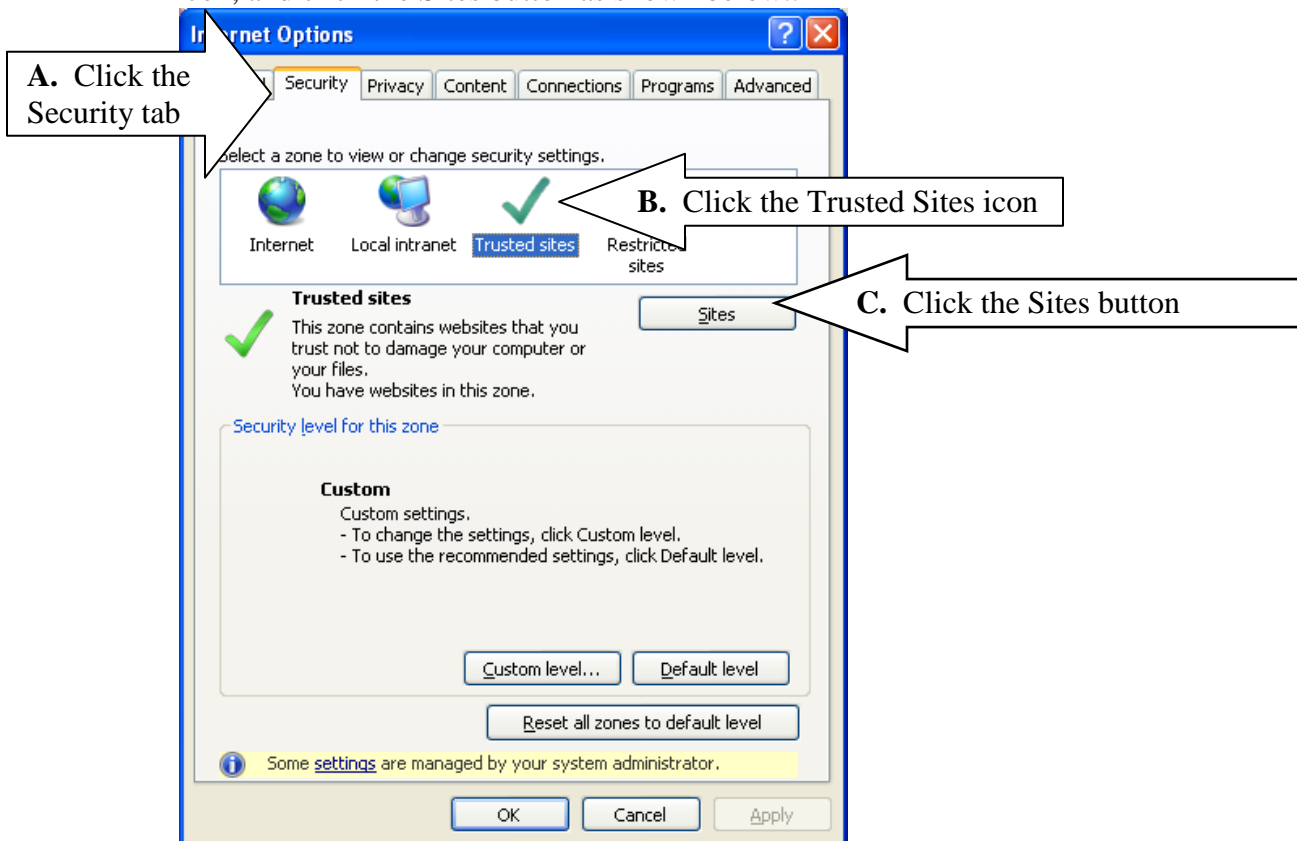
Although Internet Explorer 7 or 8 should work with LowesLink®, some LowesLink® applications may not run optimally.

If you are using Internet Explorer Version 7 or 8 to access LowesLink®, you will have to follow the instructions below to modify your security settings.

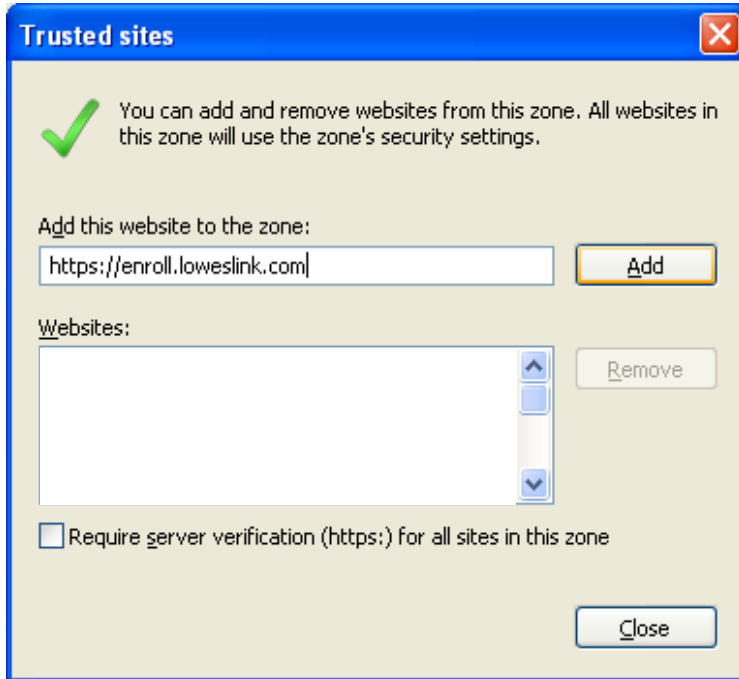
1. Open Internet Explorer 7 and click Tools, Internet Options.



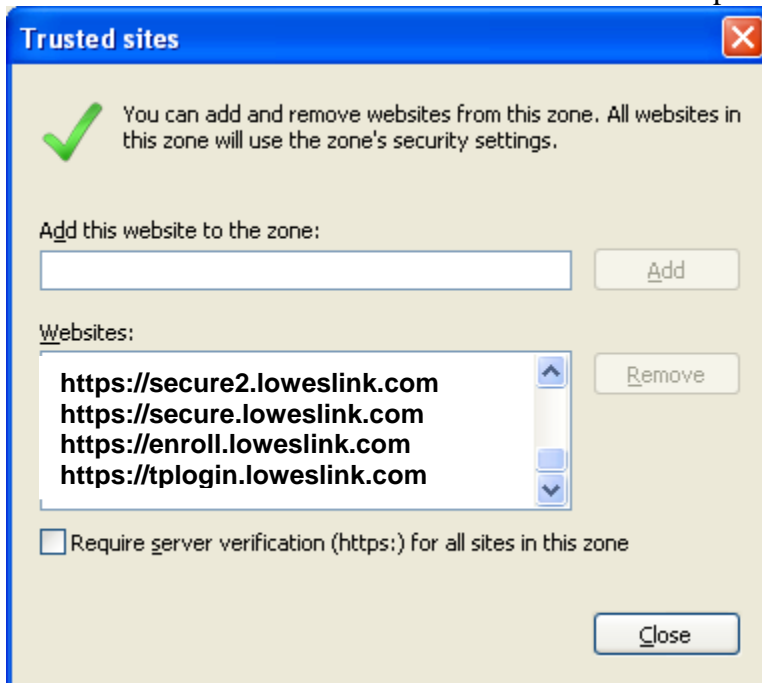
2. From the Internet Options window, click the Security tab, then click the Trusted Sites Icon, and click the Sites button as shown below..



3. Type **https://enroll.loweslink.com** in the “Add this website to the zone:” field and click **Add**.
4. Type **https://tplogin.loweslink.com** in the “Add this website to the zone:” field and click **Add**.
5. Type **https://secure.loweslink.com** in the “Add this website to the zone:” field and click **Add**.
6. Type **https://secure2.loweslink.com** in the “Add this website to the zone:” field and click **Add**.



7. Insure the four sites under the **Websites:** list match the picture below. Then, click **Close**.



8. Finally, click **OK** on the Internet Options window and then restart your browser.