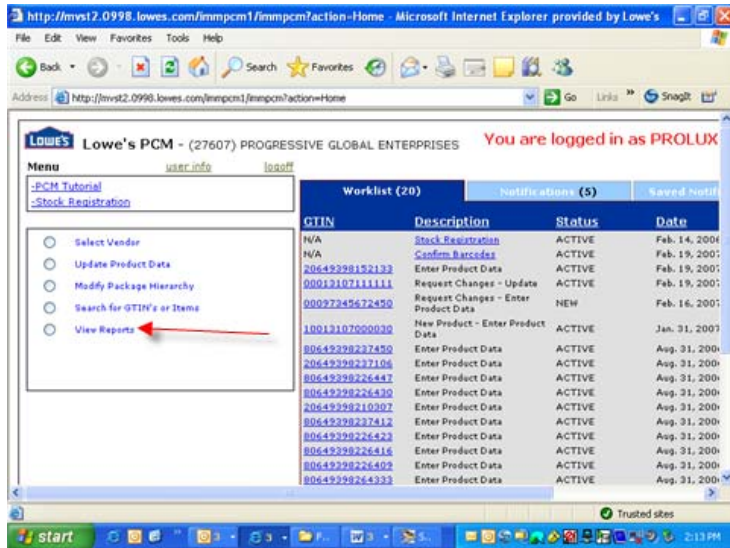


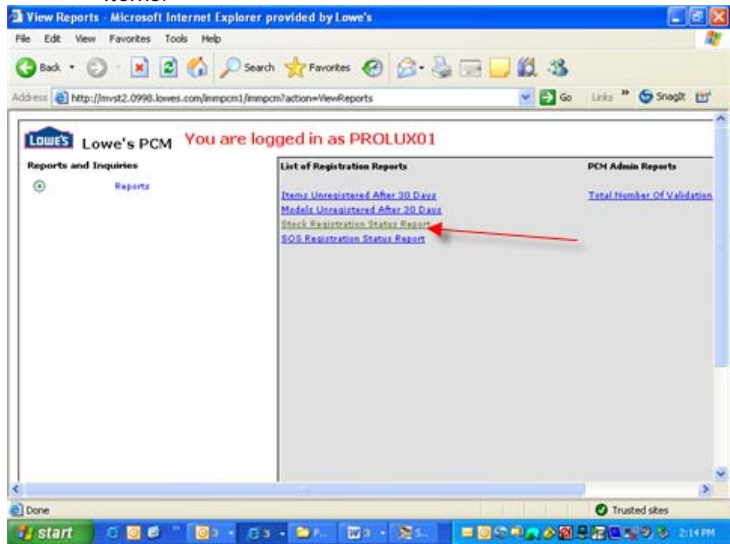
## Navigating PCM – Reports

Click the View Reports radio button on the PCM Home Page to view Item/ GTIN status.



From the Reports and Inquiries screen, select one of the following reports by clicking on its link:

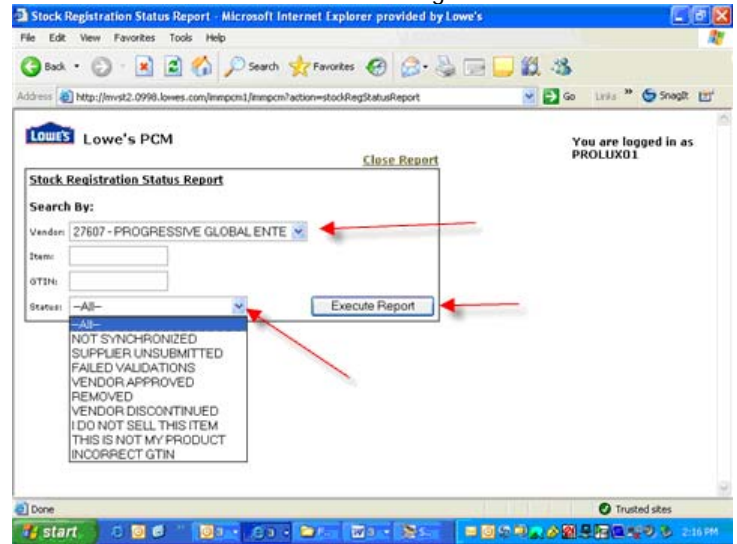
- [Stock Registration Status Report](#) to view the status of Stock items.
- [SOS Registration Status Report](#) to view the status of SOS items.



Select the Vendor # you wish to work with from the drop down for Vendor in the Stock or SOS Registration Status Reports. Then, select the Status type you wish to view from the Status drop down and execute the report. You will only need to be concerned with the following statuses:

- **Not Synchronized** - the item has not been registered in PCM. PCM Stock or SOS Registration must be complete before Item data can be entered.

- **Supplier Unsubmitted** - the item has been registered in PCM. Item data can now be entered. The GTIN link to product data screens will be found in the PCM Worklist.
- **Vendor Approved** - the item has been successfully registered and all Item data has been provided to Lowe's via web forms. To change or update product data, go back to the PCM Home Page.



You can create an excel version of the report and export to Excel. Click on the link labeled 'Create Excel Version' and follow the instruction provided to do so. You must have Excel 2003 in order to use this function. If you do not have Excel 2003, you can copy and paste into an excel spreadsheet.

